

## Introduction

Thank you for your interest in Artist Residencies at artsdepot.

Before you submit your application, please read the information included here carefully. These notes are intended to help you make the most of your application. Each year, we invite applications from artists and companies who wish to explore exciting new ideas in our Creation Space.

For any questions or to talk to us more about the support we can offer, please contact our Artist Development Producer Zoe via [artistdevelopment@artsdepot.co.uk](mailto:artistdevelopment@artsdepot.co.uk)

## About artsdepot

artsdepot is a multi-art form venue with two theatres, a gallery, dance studio, drama space and an art room. We are also home to undergraduate dance college, London Studio Centre. We present a high-quality performance and participation programme across all art forms for all ages.

artsdepot has supported artist residencies in our Creation Space since 2014. We are proud to have collaborated with so many emerging, mid-career and established artists across different art forms to play a part in supporting the development of new work.

The core values that underpin artsdepot's work are to be:

| Our Values   |  |   |
|--|--|---|
| Creativity   | Inclusivity  | Collaborative   |
| We believe in creativity. We respond in creative ways and provide the setting for everyone to be creative on their terms   | Our work is inclusive. Everyone can access our performances and activities and we reflect our wider community in what we do. | We work collaboratively. Our programme and organisation is better when we work with others to make more than the sum of our parts |
| Respect  |  |   |
| Our work is underpinned by respect. We work in a way that respects others voices and views and expect the same from others |  |   |

## artsdepot 25/26 Residency Programme

artsdepot's Artist Residency programme is now open for applications!

Successful applicants will be given space, time and seed funding to develop their project at artsdepot. Artists and companies on our residency programme will become members of our artist alumni network and will be offered a free place on all artist development workshops with industry professionals throughout the year.

### The Space

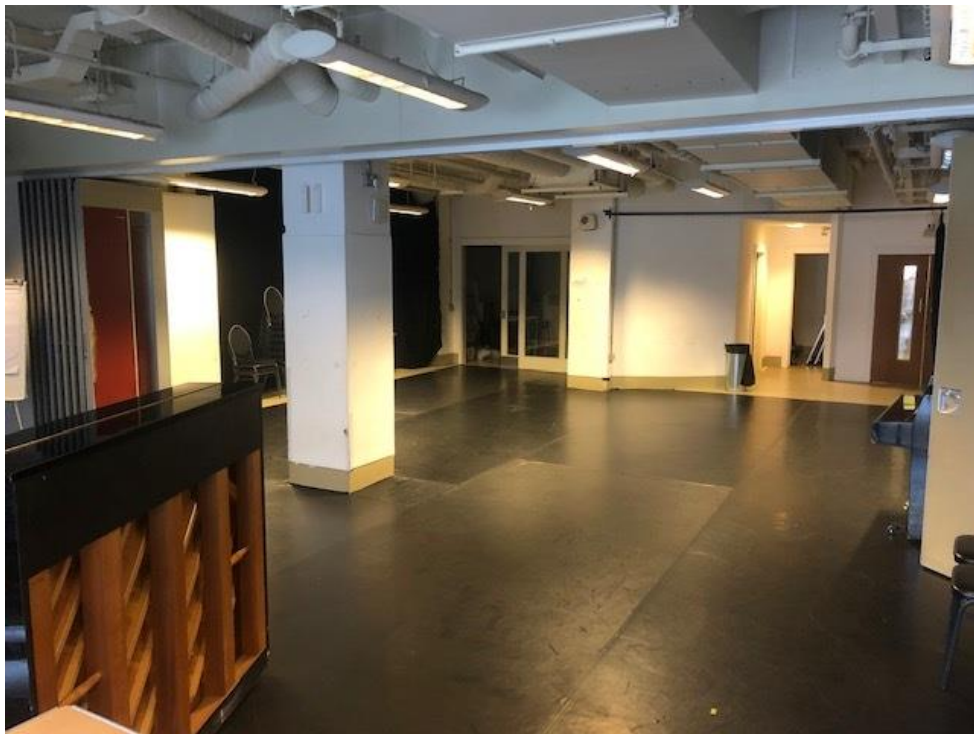
Our Creation Space is the home of artsdepot's artist development programme. It is a low-tech room with limited resources. This is not a purpose-built studio but is a lovely open and light space.

**Floor** – This is not a sprung floor but covered concrete. Please note, some dance work may not be suitable.

**Ceiling Height** – 2.4 metres (it is a ceiling with exposed pipe works)

**Rigging** - There are no rigging points within the space.

**Technical** – There is a sound system within the space and basic lighting, both controlled by a desk. All other technical equipment has to run from 13amp plug sockets and must be PAT tested.





## Who Can Apply

This year, we are looking for 8 artists or companies to join our 25/26 residency programme. Artists and companies at any stage in their career are welcome to apply. Whether you're emerging, mid-career or established, if you have a new idea you're keen to explore, we want to hear from you.

### Young Artist's Residency

We are designating one spot for an emerging artist or company aged between 18 – 25. This residency will be given more mentoring support from the Producing team at artsdepot during their residency period. We encourage applications from artists where this may be one of your first projects and we are happy to offer a chat with artist development producer about your application prior to submission.

### Tsitsit Sponsored Festival Residency

We are delighted to be continuing our collaboration with the Tsitsit Festival ([www.tsitsitfringe.org](http://www.tsitsitfringe.org)) who will be supporting 4 artist residencies.

Tsitsit are keen to help develop new works that reflect contemporary and historic Jewish identities and cultures. They are particularly interested in work that takes its starting point as the Diaspora British Jewish experience, but their overall approach to work they want to feature is very broad, hence the strapline: 'If its Jewish enough for you, its Jewish enough for us'. Artists sponsored by Tsitsit will showcase their process or idea ( e.g play reading, work-in-progress or performance) as part of the following year's festival programme In November 2026.

## Barnet-based Artist Residency

We will also be designating 1 spot to an artist who is based or works in the Borough of Barnet.

We welcome applications from those underrepresented in the arts and creative sector. We particularly encourage applications from performance-makers from Global Majority or mixed heritage backgrounds, LGBTQ+ performance-makers, D/deaf performance-makers, disabled performance-makers and performance-makers from working class backgrounds.

## The Residency

We're committing to supporting the development of the projects on our residency programme over a 12-month period, so the support listed below can be spread across that time.

Residency Artists will receive:

- **Rehearsal Space:** Artists can apply for up to 4 weeks of rehearsal space in our Creation Space as support in kind to develop their artistic idea. This can be flexible around the needs of your project. For example, you can have your first week with us to focus on script development and funding applications, then return 6 months later to rehearse for 2 weeks, then return a month later to focus on the project's next steps.
- **Work-in-progress Performance:** Artists will have the chance to present their project, if they wish, at a Residency sharing event at the end of this cycle. Please note, this outcome is optional.
- **£1,000 seed funding**
- **Mentorship/support from the artsdepot team:** Tailored to the needs of your project, this may be in the form of a letter of support for an Arts Council application, advice on approaching venues for programming or connecting artists with local communities around artsdepot for participatory events
- **Access to free hot desking space in our office and use of our Green Room:** This can be booked for free for production meetings or to carry out small castings
- **Professional Development Workshops:** Free to attend all artsdepot's Artist Development workshops throughout 25/26 academic year
- **Networking:** Artists will be offered opportunities to meet with the 25/26 cohort as well as connect with previous residency artists and their work via an alumni newsletter

Residency Artists will;

- **Offer feedback at key points during the programme** on what you hoped to achieve vs what you have achieved

- **Engage actively with our artist community** via skill development workshops and with our the other residents and alumni to offer support and share learning

## Application Process

### Artist Residency Information Session

We are holding an online information session for applications to find out more about the programme and ask any questions on Thursday 1<sup>st</sup> May at 6-7pm. For more information and to sign up: <https://www.artsdepot.co.uk/project/artist-residency-information-session/>

If you're unable to attend but would still like to be in contact with the artsdepot team about any questions you have, please email Zoe at [artistdevelopment@artsdepot.co.uk](mailto:artistdevelopment@artsdepot.co.uk)

#### To apply, please complete our online Application Form

<https://forms.office.com/e/9rs1asgRbJ>

To look at all the application questions in the application form ahead of submitting please access a word doc version on this page of our website:

<https://www.artsdepot.co.uk/wp-content/uploads/2025/04/2025-Application-Form-Questions.docx>

#### OR

Send us a video around 5 - 8 minutes long to [artistdevelopment@artsdepot.co.uk](mailto:artistdevelopment@artsdepot.co.uk) If you wish to submit your application in this way, we ask you to include:

- An Introduction: who you are and what your art form is
- Your idea: how you will use the time and next steps for the project
- An indication of how money will be spent
- Creative Team members
- Preferred month/s to do your residency (between Sept 25 – Aug 26)

We also ask everyone to complete an **Equal Opportunities form**

<https://app.upshot.org.uk/survey/b90be8a4/8905/4c03d38f/>

This information helps us to understand who is applying for our opportunities. The information you provide will only be used to check how effectively our procedures are working.

Video submissions should be sent to [artistdevelopment@artsdepot.co.uk](mailto:artistdevelopment@artsdepot.co.uk)

3-4 people will read every application independently before coming together to discuss applications. Due to the number of expected submissions, we can only offer brief written feedback to unsuccessful applicants on request.

## Application Timeline

Submissions Open on **Friday 25 April**

**Thursday 1 May from 6 - 7pm** Online Q&A Session on Artist Residency Programme and Application process, led by Artist Development producer and one of the Producing Team

Submissions Close on **Tuesday 27 May at 5pm**

artsdepot team will review applications **27 May – 13 June**

Artists will be informed of the status of their application **w/c 16 June**

Please note, interview questions will be sent out to artists who are offered of an interview in advance

Interviews **w/c 23 June**

Offers made to Artists **w/c 30 June**

Residency Dates **September 2025 – August 2026**

## Access Support

We want everyone to be able to apply for this opportunity. We're committed to being as accessible as possible at every stage of this process.

If you need access support, there are several ways we can support you, including (but not limited to):

- Providing our guidance in another format such as a word document, BSL and Large Print
- Paying for a support worker
- Accepting a video submission in BSL

Please get in touch if you need access support to apply for this via

[artistdevelopment@artsdepot.co.uk](mailto:artistdevelopment@artsdepot.co.uk) or call [020 8369 5454](tel:02083695454) (even if we haven't stated the form of support above) or to let us know about any barriers you might experience.

## Child Support

We understand that artists might have parenting responsibilities so understand if you need your child to be present for your interview or during a residency.

Please get in touch with us if you need to access any additional support via

[artistdevelopment@artsdepot.co.uk](mailto:artistdevelopment@artsdepot.co.uk)

If you have any other questions, please email [artistdevelopment@artsdepot.co.uk](mailto:artistdevelopment@artsdepot.co.uk)