



5 Nether Street  
North Finchley, London, N12 0GA  
(020) 8369 5454

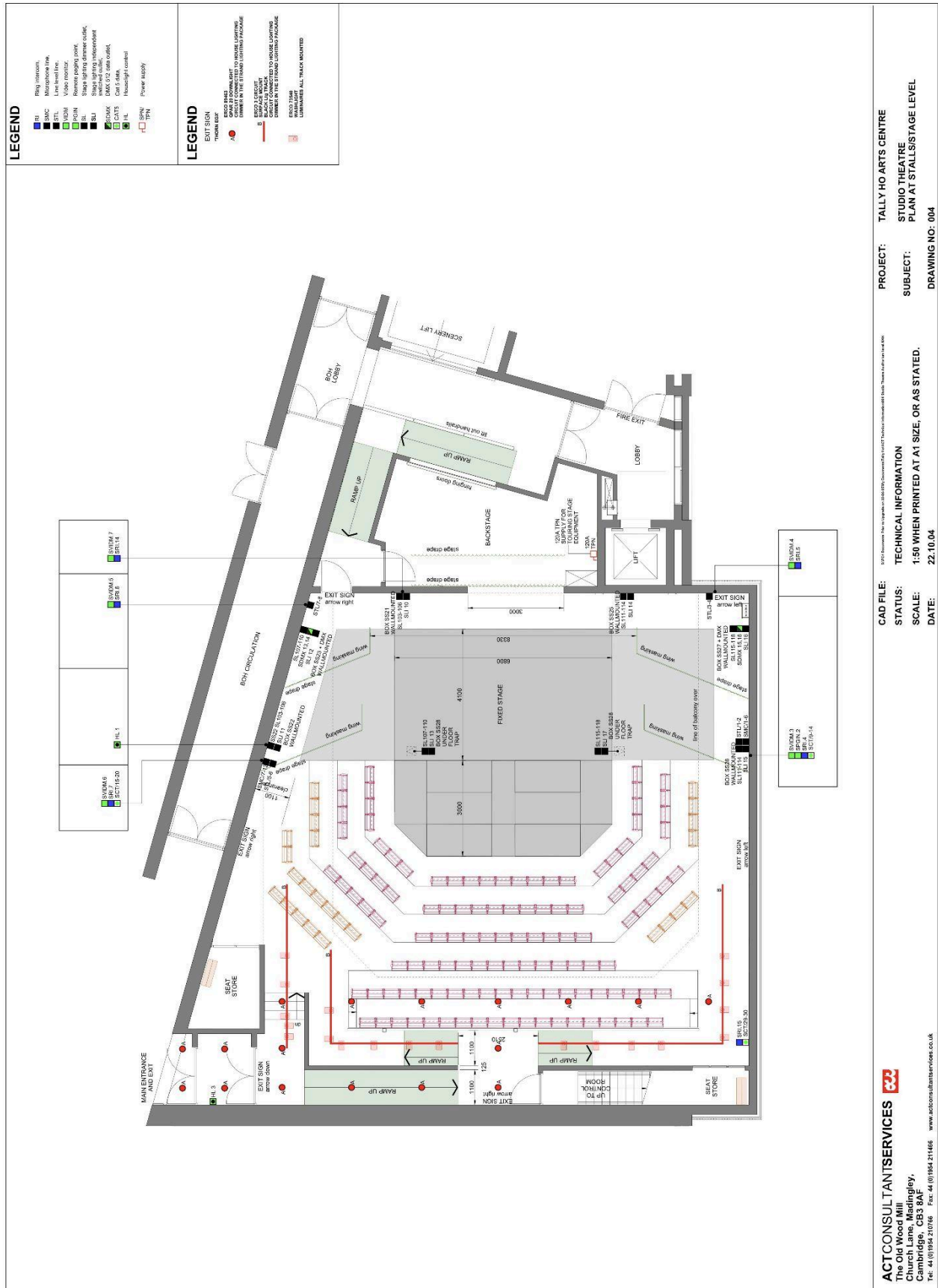
Jen Watson - **Technical Manager**  
(020) 8369 5474

[jen.watson@artsdepot.co.uk](mailto:jen.watson@artsdepot.co.uk)  
[technical@artsdepot.co.uk](mailto:technical@artsdepot.co.uk)

# Studio Theatre

Technical Specification - Updated January 2024







## **Capacity** - 148 (Seated)

## **Dimensions**

Thrust stage	6.8m wide
Main fixed stage	9.0m wide
Wings	Clear 2.5m left & right
Stage depth	5.15m
Forestage depth	3.0m bringing total depth to 8.15m
Forestage width	7.0m
Overstage	Between galleries 11.4 m
	Maximum flying bar height 5.0m

## **Overstage Bars**

18 sets of ladder bars on motorised winches (500kg capacity, length 9.0m)  
4 sets of IWB (Internally Wired Bars)

## **Backstage Areas**

2 x large capacity dressing rooms.  
1 x Green room  
2 x toilet and shower facilities  
(For more information on backstage areas, please see the FOH policy document)  
All facilities are fully accessible to disabled performers and staff

## Sound

### Mixing Desk

Allan and Heath QU-32



### FOH and Monitor Speakers:

2 x Meyer UPM-1P Overheads

2 X Meyer UMS-1P (on stage)

4 X DB Technologies B-hype active (general foldback)

### Microphone Inventory

5 X SM 58

5 X SM 57

1 X Beta 58

1 x Beta 57

1 x Audio Technica ATM250DE

4 x Pro signal MP33715

1 x Audio Technica AT2022

2 x Se Electronics 4400a

4 x Rode NT5

4 x Rode NTG1

4 x Crown PZM

2 x Wireless Handheld Sennheisers available at additional charge

### Playback

Macbook Pro - with Qlab 4

## Projection

### NP-PA500XG

Brightness: 5,000 ANSI Lumens

Resolution: 1024 x 768 (VGA)

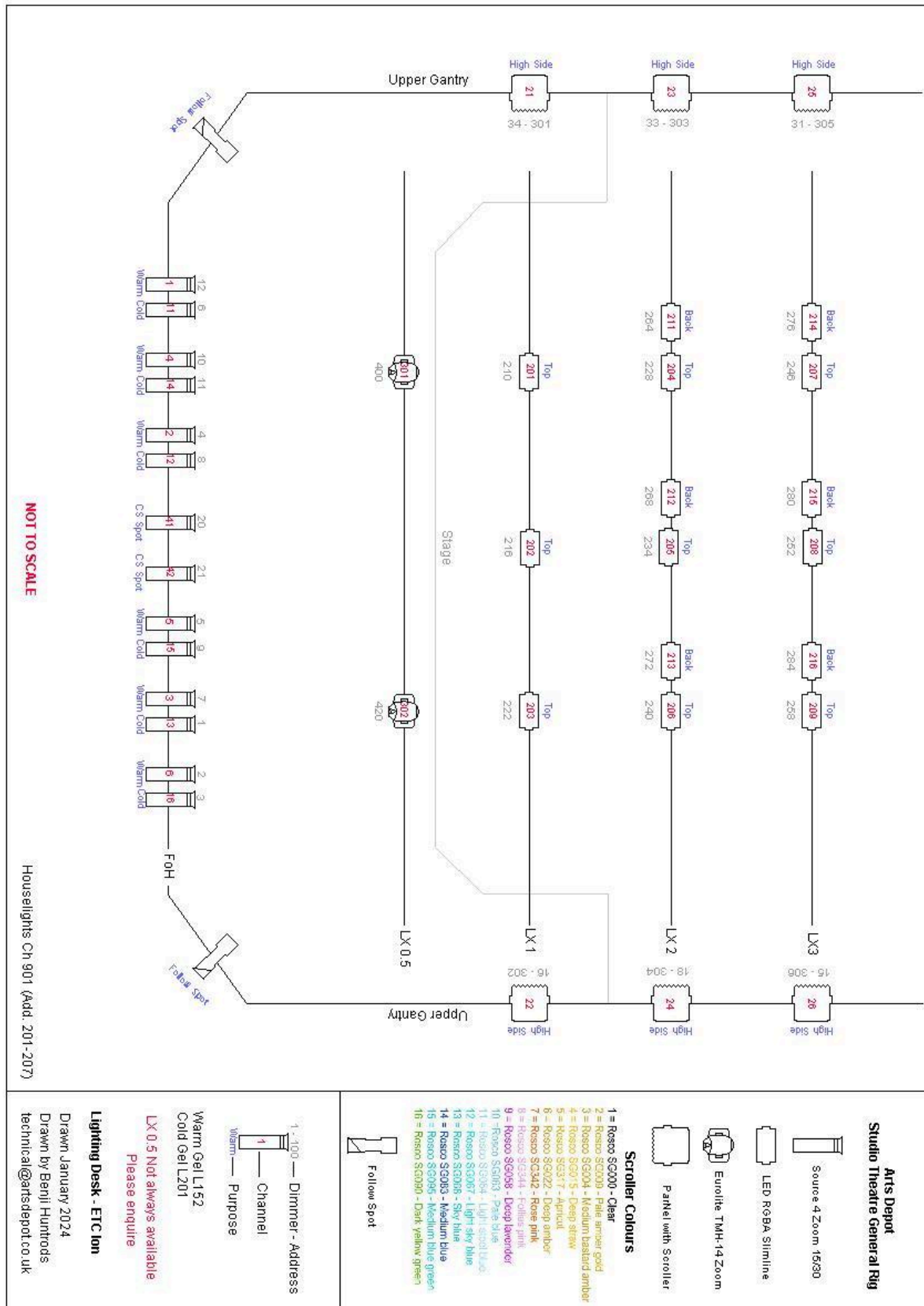
Contrast ratio: 2000:1

VGA and HDMI inputs



Projection point – cyclorama

# Lighting





### General Rig

- 15 x LED RGBA Slimline 7Q5
- 6 x ParNEL Scrollers
- 14 x S4 zoom 15/30

### Available Additional Stock (only if pre-arranged)

- 27 x Compact Fresnel 1.2k
- 4 x Cantata Fresnel 1.2k
- 4 x Cantata PC 1.2k
- 10 x Quartz 1/2k Fresnel
- 25 x S4 Junior 25/50
- 35 x S4 Zoom 15/30
- 10 x S4 19°
- 6 x S4 50°
- 6 x S4 26°
- 30 x Parcan Black (CP60, 61, + 62 lamps available)
- 5 x Parcan Chrome
- 4 x ParNEL
- 4 x Source4 Par (MFL)
- 1 x UV Cannon
- 10 x 1k Flood
- 4 x LED Showtec par
- 2 x LED Electrum tri 64 par
- 6 x LED Ultra hex par 3
- 4 x LED Slimline 7Q5
- 2 x Follow Spot - **Additional Charge and Requires Operators**

## **LX Control**

ION lighting Desk 2 x 20 fader wing

118 x 15A Dimmer

17 x 15A Non-Dimmed Circuits

16 x DMX Outlets

House Light Dimmers can be controlled through the desk

## **Power**

### **Phase Power**

2 x 16 amp single phase, on follow spot galleries (Above auditorium left and right) Normally used for follow spot

1 x 3 phase 125 amp supply in backstage lobby.

### **13A Locations**

4 x Technical Level. Back wall behind Control desks.

2 x Rear Auditorium Right

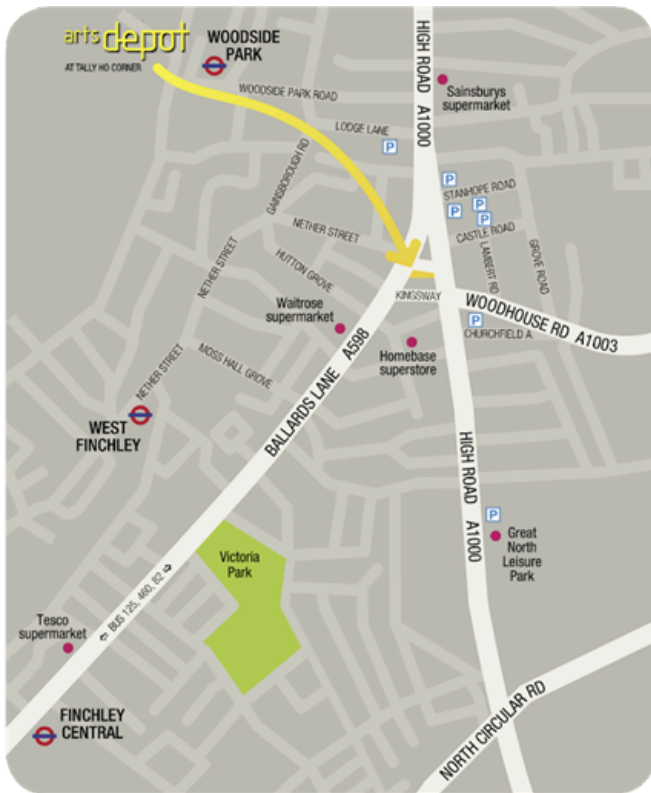
2 x Rear Auditorium Left

2 x Stage Right wing

2 x Stage Left wing



## Access - Loading Bay



**arts depot** 5 Nether Street, Tally Ho Corner, North Finchley, London N12 0GA

### What Three Words:

**steep.solve.shunts** - Entrance from Street

**handy.agreed.piano** - Loading bay Gates

Access to Arts Depot Loading Bay is located on Nether Street. Turn right off High Road and then immediately left into the large Bus Depot entrance. Drive straight on and then look for the Arts Depot Loading Bay on the left hand side. This will be covered with locked gates. Pull up next to these gates and alert Box Office or Technical of your arrival. Please see pictures for more detail.

We have a scenery lift that is 6.6m long, 3m wide, and 2.3m high – this has direct access to both theatres. The lift is located on a 1.2m raised concourse in the loading bay and we have a ramp to assist with unloading from vehicles. We often are able to offer some parking in the loading bay for the duration of your stay. Please contact the technical department for more information.

