

Pentland Theatre

Technical Specification - Updated March 2023



Capacities Based on Layout

Full Seated Total	395	Flat Floor Standing	300
Stalls Seated	264	Flat Floor Banqueting	200
Stalls Slips Seated	48		
Circle Seated	131		

Proscenium fixed opening	13.8m	
Proscenium adjustable opening	10.8m	
Wings Clear	2.4m left and right	technical@artsdepot.co.uk // (020) 8369 - 5474
Stage Depth	9.15m	
Forestage depth	3.05m	
Forestage width	10m	
Forestage (orchestra pit)	1.8m below stage	
Height of Proscenium	6.95m	
Stage height	0.88m	
Stage – underside of fly floor	6.85m	
Stage – grid	15.13m	
Auditorium – underside of FOH grid	7.82m	
Projection point – cyclorama	22.96m	

Dimensions



the

Adaptable Floor

The Pentland Theatre has **adaptable flooring** in the stalls level allowing different layouts of the space with the seating able to be stored under the floor. The Stalls can be **raked, flat and flush** with stage, or **flat and lowered** up to 1.1m below stage level. We also have a thrust stage forestage elevator which can be lowered for additional layout configuration.

The adaptable floor area is 10.9m x 12.1m

The forestage elevator is 3m x 9.975m

Orchestra level on the forestage elevator is set at 1.8m below stage





Fly plot - Pentland Theatre

Items in red cannot be moved without prior agreement

Bar	Type	General Rig Position	Distance from pros (approx)
0	Winch	House teasers	0
1	Counterweight	Hard Masking	0.1m
2	Counterweight	House Curtains	0.4m
3	Counterweight	LX1	0.63m
4	Counterweight		0.83m
5	Hemp	DO NOT USE	
6	Counterweight	Legs	1.21m
7	Counterweight		1.42m
8	Counterweight		1.63m
9	Hemp	DO NOT USE	
10	Winch		2.06m
11	Counterweight	Baffle & Border	2.26m
12	Hemp	DO NOT USE	
13	Counterweight		2.66m
14	Counterweight		2.87m
15	Counterweight	Mid Stage Travellers	3.07m
16	Counterweight		3.26m
17	Hemp	DO NOT USE	
18	Counterweight	LX2	3.66m
19	Winch		4.05m
20	Counterweight	Baffle & Border	4.44m
21	Counterweight	Legs	4.61m
22	Counterweight		4.82m
23	Counterweight		5.04m
24	Counterweight		5.24m
25	Counterweight	Moving lights	5.43m
26	Counterweight	Legs	5.63m
27	Counterweight		5.82m
28	Hemp	DO NOT USE	
29	Counterweight	LX3	6.24m
30	Counterweight	Baffle & Border	6.63m
31	Winch		6.92m
32	Counterweight	LX4	7.16m
33	Hemp	DO NOT USE	
34	Counterweight		7.57m
35	Counterweight		7.76m
36	Counterweight	Black Guaze	7.96m
37	Counterweight	Star Cloth	8.17m
38	Counterweight	Up Stage Travellers	8.34m
39	Counterweight	Cyclorama	8.66m

*** Bar 31 Winch currently OOA awaiting repair**

Overstage

30 sets of single purchase counterweight fly bars, operated from fly gallery stage right and loaded from two galleries.

Capacity 600kg each bar.

Bar length 13.6m on six lines.

4 x sets of 6-line pile-on masking, winch operated

6 x 4-line hemp sets, manually operated

Adjustable sound reflector panels, or Bafflers, on counterweight sets 11, 20 and 30.

Full set of masking drapes including house curtain, mid stage travellers, upstage cyclorama (white), side stage legs and over stage borders.

Backstage Areas

We have 4 Dressing rooms backstage that are fully wheelchair accessible. Dressing rooms 1 and 4 are larger capacity rooms, while Dressing rooms 2 and 3 have a reduced capacity but can double up as a production office. Maximum backstage capacity is **70 people** at any one time.

Regen Kitchen is situated backstage but away from the main 4 dressing rooms. This can be used for catering, additional dressing room area or production office, wardrobe area etc.

4 x Dressing rooms

1 x Regen Kitchen

1 x Male W/C

1 x Male shower

1 x Female W/C

1 x Female shower

1 x Accessible W/C

1 x accessible shower

1 x Washing machine

1 x Dryer

Additional facilities include Tea and coffee making area, small fridge, iron, ironing board, costume rails

Sound

Desk and Speakers

Yamaha QL5 Desk

2x TIO, 16 In 8 Out Stage Box

4x Meyer CQ1 (2x flown, 2x on stage)

2x Meyer UPA 2P (Flown Centre cluster)

2x Meyer M11 700HP Bass Bin

4x Meyer USM 1P Monitors



Microphone Inventory

5 X SM 58

5 X SM 57

2 X Beta 56

1 x Beta 57A

1 x Audio Technica ATM250DE

4 x Pro signal MP33715

3 x The Bone HMC1

1 x Audio Technica AT2022

2 x Se Electronics 4400a

4 x Rode NT5

4 x Rode NTG1

2 x Crown PZM

1 x Drum set mic Studiospare

7 x mono DIs and 1 x Stereo DI

2 x Wireless Handheld Sennheisers available at additional charge

Playback

Macbook Pro - with Qlab 4

Projection

Hitachi CP-X9110

Brightness: 10,000 ANSI Lumens

Resolution: XGA (1024 x 768)

Built-in dual colour wheel

Edge Blending

4 Digital Input incl HDBaseT

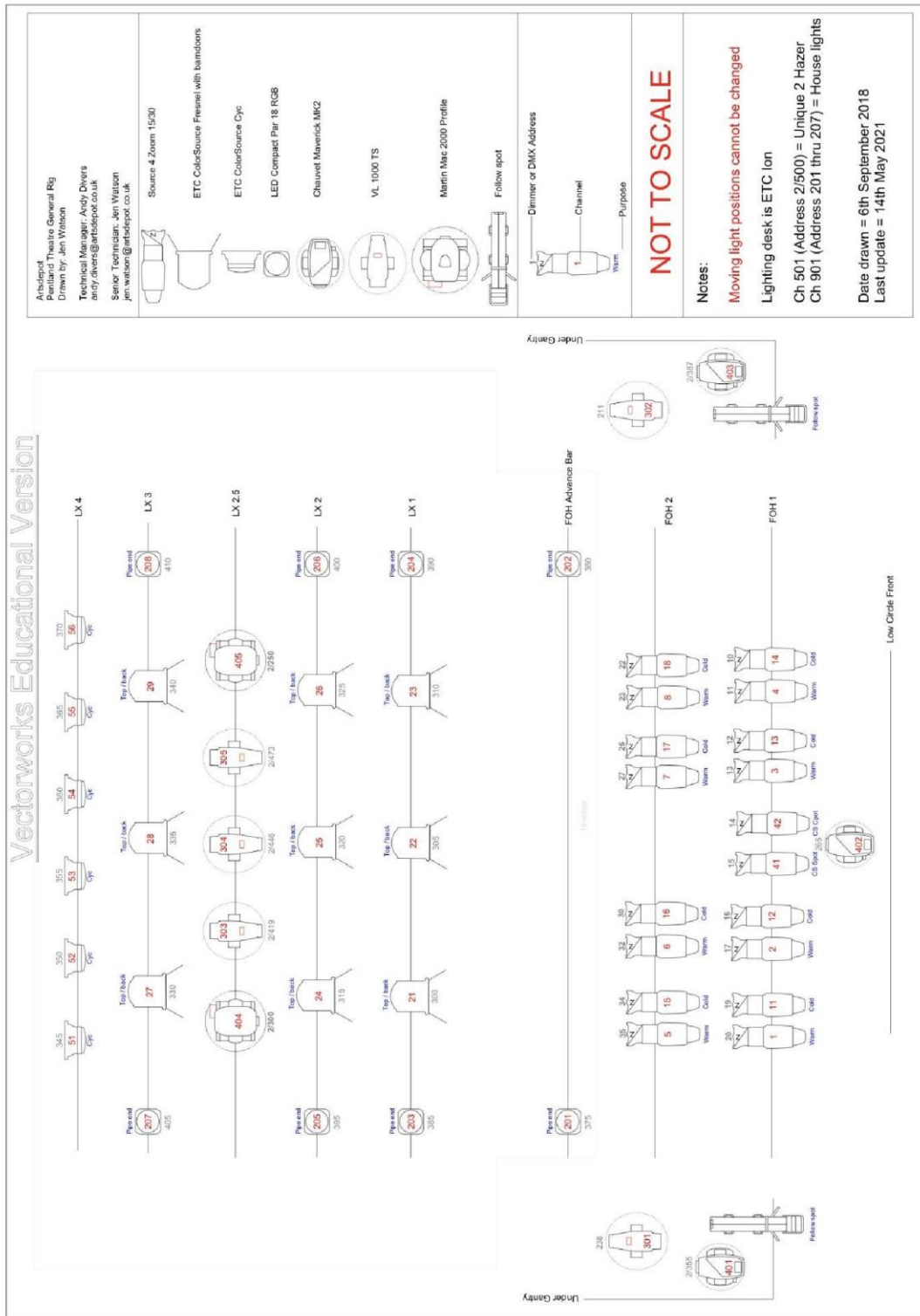
24/7 Operation Dual Lamp



Projection point – cyclorama

22.96m

Lighting



* Ch 401 Currently OOA

* Ch 303-305 have been replaced with 2x Mac 500 Profile Ch 311+312 General Rig

9 x ColorSource Spot LED with Fresnel Adapter

6 x ColorSource Cyc LED

- 3 x Chauvet Maverick MK2
- 2 x VL1000 TS
- 2 x Mac 2000 Profile
- 2 x Mac 500 Profile
- 8 x LED Compact par 18
- 18 x S4 zoom 15/30

Available Additional Stock (only if pre-arranged)

- 27 x Compact Fresnel 1.2k
- 4 x Cantata Fresnel 1.2k
- 4 x Cantata PC 1.2k
- 10 x Quartz 1/2k Fresnel
- 25 x S4 Junior 25/50
- 35 x S4 Zoom 15/30
- 10 x S4 19°
- 6 x S4 50°
- 6 x S4 26°
- 30 x Parcan Black (CP60, 61, + 62 lamps available)
- 5 x Parcan Chrome
- 4 x ParNEL
- 4 x Source4 Par (MFL)
- 1 x UV Cannon
- 10 x 1k Flood
- 4 x LED Showtec par
- 2 x LED Electrum tri 64 par
- 6 x LED Ultra hex par 3
- 4 x LED Slimline 7Q5
- 2 x Follow Spot - **Additional Charge and Requires Operators**

LX Control

ION lighting Desk 2 x 20 fader wing

160 x 15A Dimmers

9 x 25A Dimmers

26 x 15A Non-Dimmed Circuits

28 x DMX Outlets

House Light Dimmers can be controlled through the desk

Power

Single Phase

2 x 16 amp single phase, on follow spot galleries (Above auditorium left and right) Normally used for followspots

1 x 16 amp single phase, Front auditorium right on focusing gallery

Phase Power

32 amp power

1 x 32 amp 3 phase, over stage grid, stage left

63 amp power

1 x 63 amp 3 phase on winch gallery, stage left

125 amp power

2 x 125 amp 3 phase, situated stage-left, stage level

1 x 125 amp 3 phase, on focusing gallery, auditorium right

13A Locations

6 x on back wall of control room behind desks.

2 x Rear auditorium left

2 x Rear auditorium right

2 x Front auditorium right

2 x Down stage right

2 x Down stage left

2 x Front auditorium right on focussing gallery

2 x Rear auditorium right on focussing gallery

2 x Rear auditorium left on focussing gallery

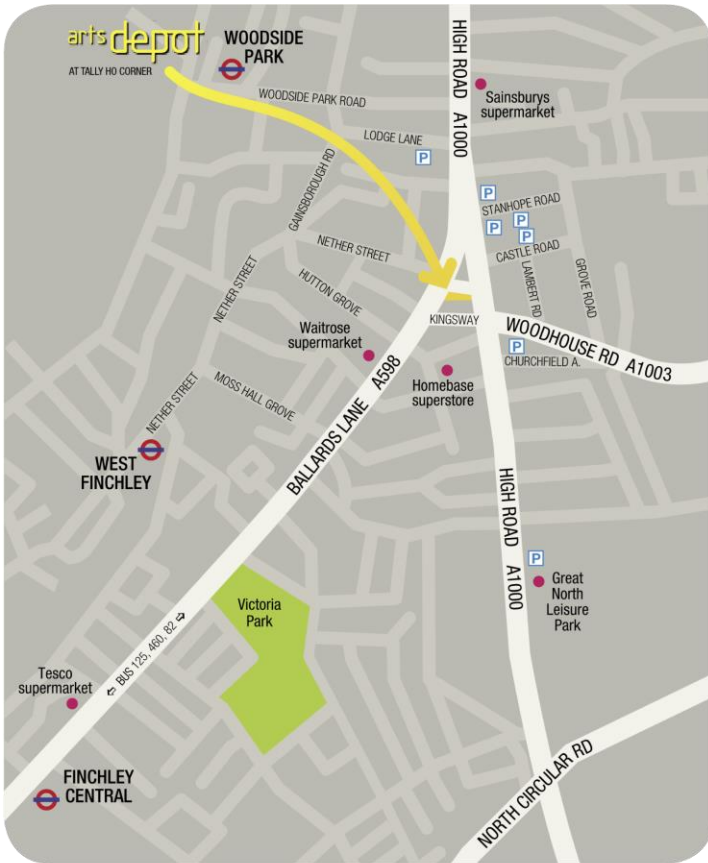
2 x Fly galley down stage

2 x Fly gallery up stage

2 x Winch gallery up stage

2 x Dimmer room

Access



arts depot 5 Nether Street, Tally Ho Corner, North Finchley, London N12 0GA

Arts Depot is located at Tally Ho Corner. Loading access is situated just within the bus depot, this area is secured and will require you to notify the box office upon your arrival to gain entry. We provide 2 bays and can accommodate a vehicle length of 16m. The loading bay also provides limited parking for the duration of your event. Please contact the technical department for more information.

The scenery lift provides direct and easy access to both the Pentland and the Studio theatres, and is located on a raised concourse 1.2 metres from ground level, in the loading bay. The lift is 6.6m long, 3m wide and 2.3m high, and can comfortably accommodate most set pieces.

If you require any more help please don't hesitate to contact the technical department.

technical@artsdepot.co.uk

020 8369 5473